



Manukau
Christian School

Prospectus

2025



Cambridge Assessment
International Education
Cambridge International School

"The fear of the Lord is the beginning of knowledge..." Proverbs 1:7

Contents

| | |
|--|---------|
| Welcome | Page 1 |
| Our History | Page 2 |
| Our Aim | Page 2 |
| Why Manukau Christian School? | Page 3 |
| Where are we? | Page 4 |
| Quality Assurance | Page 4 |
| Cambridge International School | Page 5 |
| Cambridge Qualifications | Page 6 |
| Year One | Page 6 |
| Primary Curriculum (Years 1 to 8) | Page 7 |
| High School Curriculum (Years 9 to 13) | Page 9 |
| High School Features | Page 10 |
| High School Highlights | Page 11 |
| Parent Information | Page 13 |
| Statement of Faith | Page 17 |
| Staff List | Page 18 |
| Trustboard | Page 18 |
| Term Dates | Page 19 |
| Directory | Page 19 |
| How to Enrol | Page 20 |
| Financial Information | Page 21 |
| Schedule of Fees | Page 22 |
| Conditions of Enrolment | Page 24 |
| Notes | Page 25 |

Welcome to Manukau Christian School



On 2nd July 1987, as a young foundation student I attended the public opening ceremony of St Andrew's Christian School (now Manukau Christian School). It was officially opened by Rev. Arthur Gunn and a plaque was placed outside the first classroom with this verse from the book of Proverbs.

'The fear of the Lord is the beginning of knowledge.'

This verse encapsulates what Manukau Christian School is about. For someone new to the Bible and to the Christian faith, it may seem strange that we would fear our God, let alone that this fear is the beginning of knowledge or, as we read elsewhere in the book of Proverbs, wisdom.

Why would a school want children to fear God? Well, the truth of the matter is that it is not *whether* you fear, but a matter of *what* or *whom* you fear. Everybody fears something or someone. If we don't fear God, we will fear others—the opinions of the majority or the popular—and what we fear orders our lives. Our lives will be ordered either by God, or by man. If the fear of the Lord is the beginning of knowledge, a corollary is that the fear of man is the beginning of foolishness. So, we must care more about what God thinks. That is the path to truth and a life lived well.

But isn't fear a stifling emotion? Isn't love better? The fear of the Lord is the kind of fear a child has for a loving father who expects his children to be respectful and well behaved and listen to him. The fear of our

Heavenly Father drives us to him. First of all it drives us to him in repentance and faith. Through the atoning death of Christ we are made new creatures. Then the fear of the Lord drives us to want to understand his world and the wisdom he has imbued here so that we may live our lives in a way consistent with reality.

Christian education has, as its ultimate goal, the creation of well-rounded disciples of Jesus Christ. This is the task Christ gave his first disciples in Matthew 28 in a section known as the Great Commission. Because Christ has all authority in heaven **and on earth** he requires us to disciple the nations, teaching them to obey all that Christ commanded. This world belongs to Christ twice. He made it and he redeemed it.

Since Christ is king, we as adult disciples pass on to the next generation of disciples a Christian worldview. We want our students to understand Christ's world from a biblical perspective. We aim to help students understand the world he made, to discover the intricacies of his orderly creation, to think God's thoughts after him. A truly rigorous and academic education is a Christian one. We believe that the education we provide will equip our students academically for life in God's world. Moreover, we want our students to have their characters developed with a Christian ethical framework so that they live lives that are pleasing to our Lord and king. It is our great hope that an education at Manukau Christian School will produce 'holy troublemakers': young adults who fear God, not man; men and women who live for an audience of one. We want to see courageous disciples of Christ raised up who seek to apply the Scriptures to all of life and see God's name honoured wherever he places them.

It is a great privilege to serve you in helping educate your children in this way.

Scott Kennedy, Principal

Our History

Manukau Christian School was established in 1987 with a small core group of twelve students, and was then known as St Andrew's Christian School. Mr Ross Thompson, the pastor of St Andrew's Presbyterian Church at the time, and a group of parents who were seeking Christian education for their children, were pivotal in setting up the school. Thirty-seven years later our school still has a close working relationship with Covenant Presbyterian Church, its Pastor and members of the church community.

The foundation Principal, Mr Shane Kennedy, started his tenure in 1992 and retired in 2017. He was also a parent member of the school's founding committee in 1987. The school has continued to grow and flourish since its inception. Mr Pete Slaney was Principal for five years from 2018 until 2022. He was succeeded by Mr Scott Kennedy in 2023.

In 2005 we relocated to the site at Rogers Road and became known as Manukau Christian School. This name reflects our geographical location and the large area that comprises our school community and the people we serve. The school is a private, Christian school, catering for students from Year 1 to Year 13.



Our Aim

We aim to partner with parents in providing a Christ-centered education that equips students for academic excellence and faithful Christian living. We strive to develop students who embody wisdom, strength, and humility, preparing them to engage the world with a robust Christian worldview. By God's grace, they will be equipped to apply Christ's lordship to all areas of life, demonstrating moral integrity, intellectual rigor, and courageous conviction. Through this, we seek to raise responsible adults who are prepared for a life of service to God and their communities, exercising godly dominion in the world according to their God-given gifts.

Mission

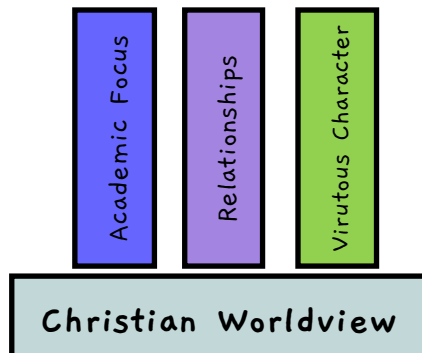
Pursuing academic excellence to develop responsible and courageous disciples who apply Christ's kingship to all of life.

Vision

At Manukau Christian School, success means staying committed to our Reformed Christian heritage and ensuring generational faithfulness. Our vision is to create an enduring legacy of students and leaders who are deeply rooted in the Christian faith, able to discern truth from falsehood, and have the courage and drive to see Christ's redemption bring cultural transformation and the extension of Christ's kingdom in all areas of New Zealand's society.

Why Manukau Christian School?

- We lay a solid biblical foundation, equipping students to engage with and transform society through a robust Christian worldview, affirming Christ's lordship over all of life.
- Our students grow into mature, grounded Christian men and women who reflect Christ's redemption in every area of life.



- We are committed to developing academic excellence by laying a strong foundation of knowledge.
- We maintain high standards from day one, with daily homework checks, weekly progress reports, and full descriptive reports provided in Term Three and Term Four.
- We encourage self-motivation, fostering an essential skill for their future success.
- We partner with parents in the education of their children, holding formal Parent-Teacher meetings in Terms One and Three, and remaining available for discussions throughout the year.
- Our Christian ethos and conservative biblical values allow children to feel safe in and out of the classroom environment.
- We foster a caring, family-oriented environment where children support one another, and bullying and inappropriate behavior are not tolerated.
- A traditional classroom setup maximizes learning time and develops respectful teacher-student relationships.



Manukau Christian School is a Cambridge International School and a member of:

- The Association of Cambridge Schools in New Zealand
- The Independent Schools of New Zealand
- New Zealand Association of Christian Schools

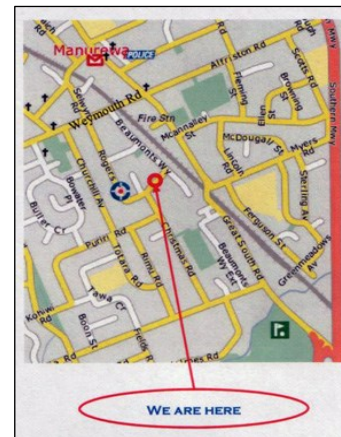
Where are we?

Manukau Christian School is situated in the heart of Manurewa and caters for students from **Year 1 to Year 13**.

As a private school we have **no enrolment zone**. Our families come from the larger Manukau area, including Mangere, Papatoetoe, Takanini and Papakura, as well as further afield to include Pokeno, Pukekohe, Clevedon and Drury.

The school, based at **77 Rogers Road, Manurewa**, is a 10 minute leisurely walk from the Manurewa Train and Bus Station.

To view Train and Bus Timetables, visit www.at.govt.nz



Quality Assurance

The Education Review Office (ERO) is the New Zealand government's external education evaluation agency. In 2020 ERO updated its reporting format for registered private schools. Reporting was streamlined to list the criteria required for continued registration and whether this criteria has been met. Subsequently ERO reports for private schools has very little to say that helps inform parents as to the quality of education.

At MCS we constantly monitor and evaluate what is working well and where improvements can be made—reinforcing a culture of on-going improvement and growth. Reaching positive learning outcomes of deep knowledge, transferable skills, positive attitudes and life-long habits are considered crucial for all our students.

Excerpts from leaving students:

"One of the most important things the school has done for me, was bringing me to God and constantly reminding me to work hard and to never give up. I truly appreciate the healthy environment created at MCS and the close relationships I have developed with teachers and students." *Nasia*

"I am glad to have had the opportunity to attend a school with such strong Christian values and teaching. This school taught me the importance of discipline, working hard and striving for my goals whilst diligently serving God." *Ruth*

"Perhaps the most amazing thing about attending this school was that, while the Bible was taught in classrooms, a Biblical worldview was taught through the lives of the staff. It was one thing to have a lesson on apologetics and various doctrines, but it was another to see our teachers stand up for what they believe regarding these doctrines." *Jessica*



"One of the things that I will be eternally grateful for is that MCS taught me to ask questions. This is seen most evidently in Bible book discussion, where we come together as a class and talk about the big questions that have been on our mind for that week. I loved those lessons, and in them I have come to solid conclusions on problems. Secondly, to put it simply, the teachers are awesome." *Thomas*

Manukau Christian School is not an integrated or a state school, but an independent school. Our special character enables us to run a Christian curriculum in conjunction with **Cambridge International Education**. We are proud to be part of the world's largest international community of schools. This gives your child an internationally recognised benchmark at both primary, middle and senior levels.

The curriculum is well-structured and focuses on core subjects that provide essential tools to learn all other subjects. Our belief is that we are responsible to impart a foundation and framework to children that will enable them to keep growing and learning for the rest of their lives. Therefore, we focus particularly upon the core subject areas which are essential to all other learning. The most foundational subjects are those related to language and numbers.

It is important that children start early to get a good foundation. We have found that where students transfer to Manukau Christian School out of the state system in Years 6, 7, and 8, their work standards and educational levels are invariably behind students who have been grounded in MCS from the early years and may require remedial work.

There is strong and growing interest for students at senior levels to qualify under the internationally recognised Cambridge International Examinations system. These qualifications are recognised throughout the world, whereas the New Zealand NCEA system is recognised only in New Zealand.

In order to do well at Cambridge International exams in later school years, it is essential that a good educational and scholastic foundation is laid in the early years. By linking in with the Cambridge framework and by using the Cambridge Checkpoint system, we are able to offer a comprehensive preparatory education for students to excel at Cambridge International Examinations.

A leaflet for parents and students explaining the benefits of a Cambridge education is available by accessing the following link: <http://www.cie.org.uk/images/284344-why-cambridge-.pdf>

Recent Results

In 2022, students sitting Cambridge International Examinations had exceptional results:

- Domestic school leavers had a 100% University Entrance rate
- 41% of our IGCSE results were an A*
- 80% of our IGCSE results were a B and above
- There were no fails in IGCSE
- Top students in New Zealand since 2020
 - Three in IGCSE Maths
 - One in IGCSE English
 - Two high achievements in IGCSE Economics



Cambridge Qualifications

Years 1 to 6: Cambridge Primary Checkpoint

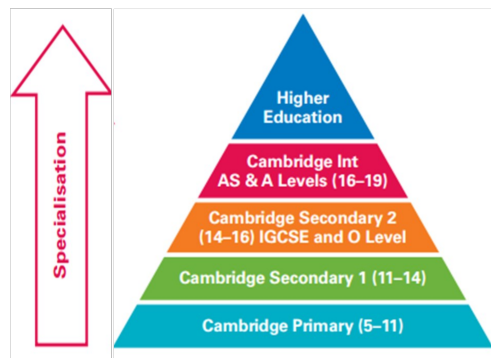
Course work through primary years culminates in the Cambridge Primary Checkpoint exam at the end of Year 6 in Maths and English. The results of these exams enable our teachers to identify students' strengths and weaknesses for subsequent year levels.

Years 7 to 9: Cambridge Secondary 1 Checkpoint

At the end of Year 9, students may sit the Cambridge Secondary 1 Checkpoint examinations.

Years 10 and 11: Cambridge IGCSE

These examinations and qualifications are well known and recognised in the international education arena. This two year programme begins in Year 10 and carries through until the end of Year 11. Students are given a broad-based foundation from which they can specialise in Year 12 and Year 13.



Years 12 and 13: Cambridge International AS and A Levels

Entrance into university is attainable through achievement of Cambridge International AS and A Levels. A Levels are usually spaced out over two years and are made up of two units: AS (Year 12) and A2 (Year 13) levels.

University Entrance via CIE (See Pathways Guide for details)

| | |
|----------|--|
| Numeracy | D grade in IGCSE Mathematics |
| Literacy | E grade in AS English |
| General | 120 points on UCAS tariff |
| | 3 x D grades in AS and/or A level subjects |

Year One

Our Year 1 Programme offers:

- Individualised school readiness assessment and feedback to each family.
- Excellent consolidation and sound knowledge of foundational concepts, leading to enhanced future learning.
- A reading and phonics programme that will have your child reading in Year 1.
- A multi-sensory, skill-based math program to help produce confident problem solvers who enjoy the study of Math.
- Specialised training to encourage great listening, learning and concentration skills.
- An exciting Gymsports programme in Term 1 to develop a healthy body image and improved gross motor skills.



Primary Curriculum (Years 1 to 7)

Bible

Our Bible programme is designed to teach children to study the Bible for themselves, understand its message and seek to apply God's Word to every aspect of their lives.

English

This includes handwriting, reading, spelling, grammar, writing and oral expression.

Phonics

A solid foundation in reading will reap rewards later. A strong emphasis is placed on teaching phonics so that children learn to read and write within the first year.

Our two-fold approach to phonics includes our own phonics programme plus the Letterland programme, which has proven to be very successful. Our systematic approach is complemented by reading at home every day. Children are taught to 'sound' out unfamiliar words.

Spelling

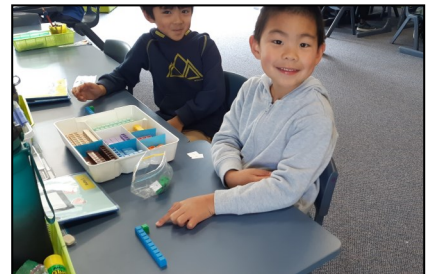
In Years 2 to 7 we use the Sequential Spelling programme to teach our students spelling. This approach teaches children to recognize patterns of spelling based on the rules of English language.

Maths

The progressive style of our math courses enable children to advance where necessary or revise concepts not yet mastered. Our "Maintenance Maths" approach revisits required knowledge and skills regularly. We focus on developing students' mental math speed, which prepares them for success later on. Addition, subtraction or multiplication tables are set as homework daily.

Science

Science is taught to equip students with skills and knowledge that recognises order, purpose and the wonder of God's creation. We focus on developing investigative, practical skills. As a full Year 1-13 school, our expert high school science teachers review our primary programme to ensure our students achieve the knowledge and proficiency they need to succeed.



Primary Curriculum (Years 1 to 7)

Culture

This is a biblical alternative to Social Studies. Students are taught that God is the God of history. They learn how to interpret and evaluate history and geography and present day society in the light of God's Word.

Music and Art

These are taught from the perspective of developing skills and encouraging their creativity in worship in our creative God.

Other Subjects

Home economics, technology, crafts, languages, photography, economics and computer studies are available for students in modules. These are usually studied by the upper primary and high school students.

Sport and Physical Education

Each class has designated times for Physical Education throughout the week. We aim to take Year 1 and 2 students to Bruce Pulman Park for Gymsport and older students take part in the Community Swim programme (supported by the John Walker Find Your Field of Dreams Foundation). All students take part in the annual cross country event. We also participate in the Auckland Christian Schools competitions that may include cross country, netball and soccer. As our focus is on traditional academic excellence, we do encourage children who want more sporting opportunities to join a local club.

Trips

We endeavour to link into the curriculum events that may be of special interest. A fee will be charged to cover the cost of trips and hiring a bus.

Celebrations

Students in the primary school celebrate special occasions such as Letterland Day, Storybook Day, Career Day, Culture Day, Fathers' Day, Mothers' Day and Grandparents' Day as applicable to their year level.

A Year 1 to 7 Curriculum Overview booklet is available on request.



High School Curriculum (Years 8 to 13)

At Manukau Christian School we offer a robust range of subjects grounded in a biblical worldview to prepare students both academically and spiritually. These diverse subjects and modules ensure that students not only receive a rigorous academic education but also have opportunities to develop personal interests and skills that will serve them in various life contexts.

Our high school curriculum includes:

- **Bible and Worldview Subjects**

Bible, Logic, World Religions, Western Civilization, Christian Ethics, God and Government, and Critical Theory to provide students with a strong foundation in Christian thinking and the ability to engage thoughtfully with the world.

- **Cambridge Subjects**

We offer a wide range of Cambridge subjects that enable our students to prepare academically for tertiary education. Subjects include

- ◆ English
- ◆ Mathematics, including specializations in:
 - ◆ Pure Mathematics
 - ◆ Statistics
 - ◆ Mechanics
- ◆ Science with dedicated courses in:
 - ◆ Biology
 - ◆ Chemistry
 - ◆ Physics
- ◆ Economics
- ◆ History
- ◆ Geography
- ◆ Psychology



- **Specialized Modules**

In addition to our main curriculum, we offer a series of short, intensive five-week modules designed to expose students to a variety of skills, interests, and worldviews. These include Cooking, Coaching, Chess, Worldview at the Movies, Squash, Badminton, Introductory Greek, Drama, Debate, Film Workshops, Science Demonstrations, The Philosophy of Star Trek, Art, and Calligraphy.

- Our school strives to have high academic expectations for your child so that they can have choices for tertiary education.
- Teaching children how to think and live out a Biblical worldview will be a focus of our Bible programme. This is essential to prepare your child for adult life.
- Please ask for a **High School Curriculum and Qualifications Pathway Guide** - this booklet contains information regarding subjects and pathways for entrance into tertiary establishments.

We encourage you to think about whether our High School would suit your child. We believe your child will thrive, discovering and developing his/her God-given gifts in our school as he/she prepares for a life that makes a difference. Entry to the High School from Year 8 into Year 9 is not automatic: every student needs to apply. Preference is given to students who are already enrolled in the primary school at MCS.

High School Features

Features

- Teaching and learning are linked to international and external benchmarks to provide a measure of the school's achievements in the wider context.
- External Exams through Cambridge IGCSE and Cambridge International AS and A levels.
- By subscribing to the Cambridge curriculum we ensure your child has the opportunity to achieve an internationally recognised qualification.
- Our school is committed to maintaining high academic expectations for each student, advancing opportunities in tertiary education and beyond.
- Teaching children how to think and live out a Biblical worldview will be a focus of our Bible programme. This is essential to prepare your child for adult life.

Please ask for a **High School Curriculum and Qualifications Pathway Guide** - this booklet contains information regarding subjects and pathways for entrance into tertiary establishments.



High School Highlights

Trips and Camps

Year 9 students participate in an overnight tramping experience. This will be a chance to develop strong learning relationships which are vital to a positive class environment. Year 12 and 13 students have a possible mission trip and a North Island trip on alternate years.

Relationships

Our High School is not a large impersonal high school. Students are encouraged to talk to their teachers if they have a problem. Teachers have pastoral conversations with students to continue to grow and build on the relationships we foster. Research shows that students do better academically in school where each student is known by the Principal and have a good working relationship with their teachers.

Approachability

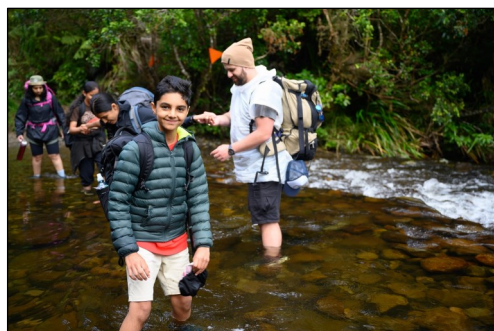
We encourage parents to continue to partner with us in the education of their teenagers. We welcome parents to attend parent-teacher interview evenings as well as open evenings to help keep you informed about tertiary pathways and subject choice planning.

Extra Help

We want every child who comes through our high school to achieve University Entrance. To that end, many of our teachers offer free after school tutorials to senior students to assist them as they prepare for the high stakes external exams. Our teachers genuinely care and do their utmost to help your child achieve excellence.

Student Leaders

The School has four houses and each house is headed by a student leader. Student leaders are Year 12 or Year 13 students, chosen for their humility, willingness to serve, respectful attitudes, initiative, work ethic, alignment to the vision of the school and their ability to inspire and lead others. Being a student leader is a privilege. It is also a humbling experience as the role is primarily one of service. Student leaders meet regularly with the Principal, organise assemblies, run sports events and serve the school in various creative ways.



High School Highlights

Modules

High school students take part in regular five week modules. These modules provide students with opportunities to learn to play games like squash and badminton as well as learn skills like debating and outdoor survival skills. Other modules include art, photography, cooking, international games, study skills, board games and worldview at the movies.

Special Days

Our high school students love to celebrate and our student leaders regularly organise special days for them. One favourite is "Dress Like A Teacher Day" where all the students come dressed up as one of the high school teachers. Another highlight has been our "Anything but a Bag Day" where students brought their school gear in...anything but a bag. This has included microwaves, rubbish bins, drawers, small bar fridges as well as a cat travel box. Other special days include the last day of term where games and competitions like House Wars are organized.



Parent Information

Tests and Examinations

Tests and examinations are an essential part of teaching and learning. Teachers carry out regular individual and class assessments of students. On-going, regular communication is a key area to keeping parents informed of their child's progress.

Every Friday

- Primary school students are tested on their spelling, tables and memory verse for the week. The test book is sent home and returned again on Mondays.
- Weekly reports are sent home, to be sighted and signed by the parent for students in Years 1 to 6, to be returned on the Monday.
- One subject book is sent home to be returned to school on the Monday for students in Years 1 to 7.

Subject Tests

Testing is carried out at the end of block of topic study (usually five weeks). This will include Science and Culture topics. The results will be in your child's test book or on Thinkwave.

Presentation Feedback (Years 1 to 4)

It is important to develop confidence in public speaking and presentations. When this occurs in class, a feedback form will be sent home. This contains both the Teacher's and your child's feedback from the presentation. This is returned the following Monday.

ThinkWave (Years 7 to 13)

An online learning management system that is available to teachers, students, parents and administrators for Years 7 and up, providing specific feedback and feedforward for each student in each assessment area. Parents are assigned a login and password to enable them to see how their child is doing across all areas of the curriculum.

Reports

Discussion reports are handed out at parent meetings early in Term 1. Full descriptive reports are handed out at the beginning of Term 3. This report is coupled with a follow-up meeting. Another full descriptive report is handed out at the end of Term 4.

Parent Meetings

These are held in Terms 1 and 3. This is an opportunity for teachers and parents to discuss your child's progress. Please remember that you do not have to wait until a meeting time to talk with your child's teacher.

Progress and Achievement Tests (PATs) (Years 3 to 8)

We use these standardised tests as a way of assessing your child's reading, vocabulary, listening and comprehension skills. Other PAT's include Maths and Study Skills. Results of these tests are handed to parents.



Parent Information - continued

Cambridge International Examinations

Cambridge Progression Tests may be sat from Year 3 onwards to determine a student's progress.

- Year 6 students sit Primary Checkpoint Examinations in Maths and English.
- Year 10 and 11 students sit external IGCSE examinations.
- Year 12 and 13 students sit external AS and A2 examinations.

Homework

We hope you will enjoy sharing with your child this aspect of their learning. The homework your child is given is an important part of their education. It is also one of the ways parents can become aware of and be involved in what happens at school, as all homework we set is reviewing what has been taught at school (or, for older children, preparing for a lesson to come).

We ask that you check your child's homework notebook each night, supervise the homework set and sign the notebook when the work is completed. If any requirement is not clear, or if there are any difficulties, the teacher concerned may be consulted and the situation discussed.

As a guideline:

- **Years 1 to 3** will normally be expected to complete 20-30 minutes of homework each night. Children on the phonics programme will need to allow an extra 10 minutes.
- **Years 4 to 6** will normally complete 30-45 minutes of homework each night.
- **For Years 7 to 8** homework allocation of 45 minutes to 1 hour each night.
- **For Years 9 to 10** homework allocation is 1 to 1½ hours per night, Monday to Friday.
- **For Years 11 to 13** homework allocation is 1½ to 2 hours per night, Monday to Friday.

House Groups

All students are allocated a house or whanau group. They can expect to be in this house for their whole time at school. The four houses are named after Christian leaders who have in one way or another made a significant contribution to the cause of Christ and who have been a redemptive influence within the world. These heroes can be appealed to as role models and they can help inspire students to live as disciples of Christ. House groups are therefore a useful tool to enable students to develop leadership skills and function as part of a team.

The four groups are:

| House | Core Value | Colour |
|-------------|-------------|--------|
| Wilberforce | Justice | Yellow |
| Calvin | Truth | Green |
| Te Wiremu | Commitment | Blue |
| Tarore | Forgiveness | Red |

Each house is headed by a student leader. House points are allocated and tallied each week. Points are awarded by classroom teachers or duty teachers. It is compulsory for each student to own a house shirt. These are available for purchase from the school office.

Parent Information - continued

Dress Code

At Manukau Christian School, we pursue academic excellence for Christ, and we believe that this commitment should be evident in every aspect of school life — including the way students present themselves. While we do not require a school uniform (except for certain events and activities), we do expect students to dress in a way that reflects self-respect, respect for others, and a commitment to excellence. Clothing should be clean, modest, tidy, and appropriate for learning. Sloppiness, flamboyance, or overly casual dress undermines a serious approach to school and is not in keeping with the school's culture.

General Expectations:

Clothes must be clean, in good repair, and free of holes. Hats or beanies are not to be worn in classrooms, and while hooded sweatshirts are permitted, hoods must remain down. Henna, tattoos, and other skin adornments are not allowed. Sunhats must be worn in Terms 1 and 4 by Year 1-7 students.

Boys:

- Hair must be tidy, well-groomed, in a short, masculine style, and natural in color (not dyed, spiked, or excessively gelled).
- No extreme styles (e.g. mohawks, shaved patterns, braided or matted hair, or long hair).
- No jewellery, bangles, or threads may be worn.
- Clothing must fit neatly and be of modest length. No singlet tops.
- High school boys must be clean-shaven.

| | |
|--|------|
| Polo shirt | \$50 |
| House T-shirt | \$20 |
| Sports shorts | \$35 |
| Hats/Caps | \$20 |
| Water-proof Jacket (pre-order only for jackets) | \$85 |

Girls:

- Hair must be tidy, well-groomed, in a feminine style, and natural in colour (not dyed).
- Long hair is to be tied back from the face (no half-ponytails).
- No jewellery, bangles, threads, or makeup (including nail polish), except for one plain stud (less than 4mm) per ear in the lower lobe.
- Clothing must be modest and fit neatly. Skirts, dresses, or shorts must be loose and provide modest coverage of the thighs. Tops must also ensure modest coverage. No shoestring or singlet tops. Tight leggings may only be worn underneath a skirt or shorts.

Footwear:

Suitable footwear includes school shoes with flat heels, sandals with backs (such as Roman sandals), and sneakers worn with socks. Crocs and similar styles are not permitted. For Year 1 students, we recommend sneakers with Velcro fastenings for ease of use. High school students must wear closed footwear in potentially hazardous areas such as the laboratory.

Physical Education:

All students are allocated a house upon entering the school and must wear their house T-shirt for PE. Boys must wear shorts and girls may wear shorts or skirts. Suitable footwear must be worn.

Trips and Events

For all school trips, students are required to wear the school polo shirt. When participating in off-site sports competitions, students must wear both the school polo shirt and the standard navy blue shorts, which are available for purchase from the school office.



Parent Information - continued

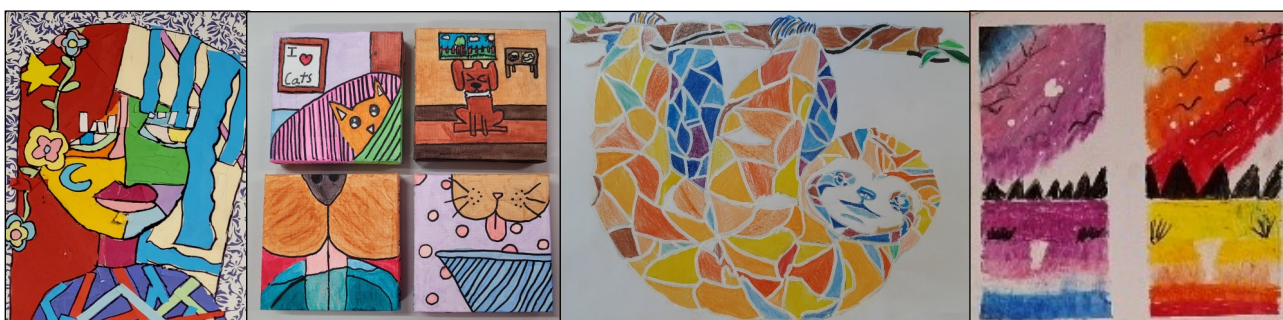
Absences and Late Arrivals

If your child is going to be away from school, please ring the school office, send an email or message via the Skool Loop App. If no message is received, an explanatory note is required from parents. Please email, reception@manukauchristian.school.nz. If your child is late they are required to sign in at the office. We strongly discourage taking holidays during term time.

Students may not leave the school grounds during school hours without written permission from parents or a phone call or email to the school office. If students are collected during school hours, they are to be signed out via the office. Please try to organise pick ups and drop offs during morning tea and lunch so that classes are not interrupted by reception having to ring the class during lessons.

Parenting Seminars

At these seminars, the Principal and a team share insights and have an open floor for questions parents may have. These are answered by a panel of MCS parents. Seminars conclude with supper and informal chatting. Every new parent to the school is asked to attend one parenting seminar as soon as possible to their child starting at the school.



Statement of Faith

- We believe in the Triune God, eternal in three persons, Father, Son and Holy Spirit, One God, the Creator of Heaven and Earth.
- We believe that the Holy Scriptures of the Old and New Testaments as originally given are the only inspired and infallible record of the revelation of God to man, and are the supreme authority in all matters of life and faith.
- We believe in the sovereignty of God in Creation, providence and redemption.
- We believe God's acts of creation, and not evolution, are responsible for the origin of all things, and that creation according to the Biblical record is an historical event.
- We believe gender is a function of God's created order and that there are only two genders; male and female, as determined by male and female chromosomes.
- Marriage is a mutually exclusive relationship between a man (genetically male) and a woman (genetically female).
- We believe in the Providence of God whereby He upholds the universe, governs the world, supplies the needs of His creatures and brings His will to pass.
- We believe that man was created in the image and likeness of God to have dominion over the earth and to do all things to the glory of God.
- We believe in man's universal fall into sin through Adam's transgression and in his subsequent guilt, depravity, judgement and condemnation.
- We believe in Jesus Christ, the only begotten Son of the Father; that He was conceived by the Holy Spirit, born of a virgin, crucified as a ransom for many, died and was buried, was resurrected from the dead and ascended into Heaven in the same body in which He was crucified; that He is presently at the right hand of God the Father as Prophet, Priest and King and will personally return to earth in power and glory to judge the living and the dead.
- We believe in the free offer of salvation to all men and the necessity of faith in the Lord Jesus Christ to be saved.
- We believe that to those who believe, God imputes righteousness, not on account of their faith but because of God's grace.
- We believe in the necessity of the work of the Holy Spirit to apply the benefits of Christ's redemption in individual sinners, working in them regeneration, faith, repentance, sanctification and glorification.
- We believe the Holy Spirit's indwelling of the believer begins at regeneration and enables the believer more and more to die unto sin and to live unto righteousness.
- We believe in the bodily resurrection of all mankind, the unjust being raised to everlasting dishonour and the just unto everlasting honour being made conformable to Christ's glorious body.
- We believe in one holy universal Church, the Body of Christ, to which all God's redeemed people belong and in which they are united through the Spirit.



Staff List

Principal: Mr Scott Kennedy BA/BSc, DipTchg

Executive Officer: Mrs Geraldine Oosterbeek DipCom, DipPR

Teachers:

Mr Ethan Aloiai BEd (**Head of High School**)

Mrs Cynthia Anbunathan MSc, MPhil, DipTchg

Mrs Elaine du Plessis BEd

Miss Priscilla Dhinakar BA, DipTchg

Mrs Cheryl Everitt BA

Mr Shaun Gibson MEng DipTchg

Mrs Angela Goodwin BEd

Mrs Janina Harris BEd DipWS

Miss Louise Kennedy BA, DipTchg

Mrs Charlotte Maney BA, DipTchg

Mrs Hannah Prakasa BSc, DipTchg

Miss Mae Savill BA, DipTchg

Mrs Jessica Schellingerhout BEd

Mrs Margaret Smilde BEd BLS

Mrs Gail Tegg BEd

Mrs Nadine Thomas BComm, PGCE (**Head of Primary School**)

Mrs Fiona 'longi-Vaea BEd MTheol

Mrs Paula van Niekerk BEd

Administration: Mrs Nicole Fickling

Lab Technician: Mrs Maria Shallard

Teacher Aides: Mrs Samantha Savill

Mrs Roneeta Chand

Caretaker: Mr Peter Donaldson



Trustboard

Manukau Christian School is managed by the Christian Schools of Auckland Charitable Trust. This Board is an independent board that meets once a term. Membership on the Trustboard is by way of invitation. The Board is responsible for the overall governance, direction and financial running of the school. They are also responsible for the employment of staff, on the Principal's recommendation.

A close relationship exists between the Trustboard and Staff as well as the Trustboard and Covenant Presbyterian Church.

Any matters you wish to raise before the Board can be addressed to the Secretary, care of the school.

Chairman: Mr Jonathan Willis

Secretary: Mrs Geraldine Oosterbeek

Members: Mr Rob Darby

Mrs Janet Simons

Mrs Catherine Faletanoai

Mr Byron Smith

Term Dates

2025

- Term 1:** 3 February to 11 April 2025
- Term 2:** 28 April to 27 June 2025
- Term 3:** 14 July to 19 September 2025
- Term 4:** 6 October to 12 December 2025
(High School Term 4 dates are posted on our website)

**School finishes at 12.30pm on the last day of each term
and Parent Teacher Meeting days.**

Directory



09-269-1050 *(Please leave a message if we miss your call)*



77 Rogers Road, Manurewa, 2102



P O Box 75-623, Manurewa, 2243



admin@manukachristian.school.nz



www.manukachristian.school.nz



www.facebook.com/groups/manukachristianschoolcommunity

How to Enrol

- Request a prospectus, or
- Visit our website www.manukauchristian.school.nz, or
- Call in at our school.



Complete an enrolment form and mail (or email) to
Manukau Christian School:
P O Box 75-623, Manurewa, 2243
admin@manukauchristian.school.nz

Include the following:

- Birth certificate or Passport (copy)
- Immunisation certificate (Year 1 enrolments)
- Latest school report with school attendance (Year 2 and up)
- \$150 non-refundable application fee
(Bank account number: 12-3615-0014533-00)



Confirmation of receipt of your enrolment form



Students in Year 4 and up will sit an assessment. This is usually carried out in Term 3 of the year preceeding enrolment



The Principal or Senior Management will interview the parents and child



Notification whether enrolment application has been accepted.



Upon acceptance a non-refundable enrolment fee of \$500 is payable within 7 days to secure a place. High school enrolments of existing families will have this fee offset against tuition fees

Financial Information

Application Fee

To apply for a place at Manukau Christian School, complete the application form and return it to the school. All applications require a non-refundable **\$150 application fee** payable by eftpos, cash or direct credit to our bank account 12-3615-0014533-00.

Enrolment Fee

Upon acceptance of enrolment, a one-off non-refundable enrolment fee of **\$500 per family** is payable. This must be paid within 7 days of invoice to secure enrolment.

Tuition Fees

- Fees are payable to Manukau Christian School, a ministry of the Christian Schools of Auckland Charitable Trust.
- Fees are levied **per term**. There are **four terms** per year.
- Fees are compulsory and paid **in advance** for the term.
- Fees represent budgeted costs for:
 - Staff wages and salaries
 - Operational costs of the school
- Our commitments are such that:
 - Our budget is prudent and leaves little room to move.
 - It is expected that tuition fees will increase from year to year to cover the cost of inflation and staff salaries and wages.
 - Once a student has enrolled we are bound to provide for that student with all costs related to such provisioning. In the same way, families are required to commit to paying their tuition fees to the school on time.
 - The school needs to know if families are struggling financially and/or families are considering withdrawing a student from school.

Primary School Fees (Years 1 to 8) cover the cost of:

- Text books
 - Materials
 - Initial Stationery
- Replacement stationery is paid for by parents as needed. Class trips and transport costs are not covered by tuition fees. Parents will be expected to pay to cover the cost of school trips.
- Cambridge Primary Checkpoint Exam Fees are payable by students, subject to the rate of exchange at the time of invoicing. Students who do not settle exam fees will not be able to sit exams.

High School Fees (Years 9 to 13):

- The purchase of textbooks (available through the school) is required in most high school subjects. Some courses and modules attract additional costs.
- Items included in fees are an ID card and a stationery starter kit (Year 9).
- Students are required to pay for trips and camps.
- Cambridge exam subject fees are payable by students. These fees are set by the University of Cambridge and are subject to the exchange rate at the time of invoicing. Fees range between \$165 to \$190 per subject. Late entries or amendments also attract a fee. Students who have not settled exam fees will not be able to sit exams.

Schedule of Fees

Tuition Fees are levied based on the table below and are inclusive of GST.

| Tuition Fees for 2025 | |
|-----------------------|----------|
| Year | Per Term |
| Year 1 to 6 | \$2,250 |
| Years 7 to 8 | \$2,350 |
| Years 9 to 10 | \$2,600 |
| Years 11 to 13 | \$2,700 |

Discounts on tuition fees are available to families who have more than one child enrolled.

| Discount Structure | |
|--------------------|-----------|
| First Child | Full Fees |
| Second Child | 10% |
| Third Child | 20% |
| Fourth or more | No Charge |

Prompt Payment Discount of 5% is applicable for **term** tuition fees paid in full within the first **five working days of the start of each term**. This discount does not apply to books, exam fees and miscellaneous items.

Payment—terms and conditions

- Enrolment fees to be paid within 7 working days of date of invoice.
- Term fees are due **in full** in the first week of each term, in advance of tuition received.
- If fees are not paid at the start of each term, monthly payments can be set up as agreed to by the Principal/Executive Officer.
- Monthly payments are due on the 20th of each month, except December (due 10th Dec.)
 - Term 1: Three equal installments in January, February and March,
 - Term 2: Three equal installments in April, May and June
 - Term 3: Three equal installments in July, August and September
 - Term 4: Three equal installments in October, November and December.
- All new enrolments are required to pay the first term's fees in full in advance.
- Payments may be made in person at the school office between 8.15am and 3.15pm.
- Payments may be made by eftpos, credit card, or directly into the school bank account (12-3615-0014533-00—please use your child's name and invoice number as a reference.)
- A **surcharge** of 1.5% will be levied for credit card payments.
- The school may charge interest on overdue balances if fees are overdue.
- Non-payment of fees will result in your child being asked to stay at home until fees have been settled.
- Further non-payment of fees may result in removal of your child from the school and any outstanding debt may be referred for debt collection.
- Payment of debt collection and other costs associated with recovery of monies will be payable by the addressee of the relevant invoice.
- Parents must give **one school term's notice** or the greater of 10 calendar weeks, **in writing** of their intention to withdraw their child from MCS. If insufficient notification is given, you **will** be liable for the next term's fees.

Schedule of Fees

Extra Tuition/ESOL

Should your child's verbal communication in English and understanding of English be at a level as to require extensive assistance, a surcharge of \$600 per term is applicable. This will be discussed with you and confirmed prior to commencement of enrolment.

High school students may attend tutorials as offered by teachers after school, at no charge.

Student Scholarships

A limited number of Charitable Student Scholarships are available to families to assist with fees. These scholarships do not cover 100% of tuition costs. Please complete an *Initial Response Form* available from the school website. Further details are also available on the school website.

Student scholarships are funded by donations. Grandparents, parents, friends and families of students may consider making a donation to the school at any time. One-off donations are eligible for a tax-deductible receipt. Alternatively, contributions can be made to the base capital of the Auckland Christian Schools Endowment Trust. Such a donation will become part of the Trust's perpetual capital. Interest earned is distributed annually to Manukau Christian School to help contribute towards fees.

If you wish to contribute to the mission and purpose of Manukau Christian School by making a donation please communicate your intentions to the school office (at admin@manukauchristian.school.nz).



Conditions of Enrolment

1. Parents must agree with and sign the Declaration of Commitment and Enrolment Covenant on the Enrolment Form.
2. All new enrolments are **provisional** for the first term subject to both parties being satisfied with the child's academic progress, attendance, behaviour and attitude.
3. All fees must be paid by due dates. Where fees have not been paid, students will be asked to stay at home. Regular or prolonged late/non-payment will lead to enrolment being cancelled.
4. Admission of children to the school will take place at the beginning of a term only.
5. An acceptance of an enrolment application into Years 1 to 8 at Manukau Christian School does not guarantee acceptance into the High School (Years 9 to 13). A new enrolment application is required for entry into the High School.
6. Parents are required to give one full term's notice in writing of their intention to withdraw a child from the school. **Any withdrawal after the last day of a term is considered a late withdrawal and parents are liable for the next term's fees.**
7. Parents must uphold the dress code, and support the discipline of the school.
8. Parents understand these Conditions of Enrolment and that documentation may be altered or added to from time to time.
9. Please read and understand the outline below:

Thank you for your interest in our school. We have adopted an admissions policy that opens the school to both Christian families and other families, who are supportive of our philosophy, objectives, and standards of education, and whose children meet our enrolment standards. Our purpose is to serve families who desire not simply a private education, but a distinctively Christian education for their children. Our Christian beliefs and teachings represent the special character of Manukau Christian School. Our school principally exists to provide Christian education for Christian families.

Before applying for admission to our school, please carefully read this prospectus so that you are fully aware of your commitments. The Handbook for Families will introduce you to many of the school's policies, procedures, and expectations for both parents and students.

Contained in this prospectus are documents and statements that explain our purpose, mission, and beliefs. This school unashamedly believes, teaches, and practices respect for the Word of God. If you do not agree with our Christian mission and beliefs, enrolling your child in our school may cause him or her confusion. For example, if a question regarding biblical lifestyles arises in your child's classroom, the teacher will answer from a biblical viewpoint consistent with our mission and belief statement. If your beliefs and lifestyle choices are not in agreement with our doctrinal stance, that answer may create conflict in your child's heart and mind. This internal conflict may drive a wedge between you and your child or between your child and the school. This may impede your child's learning or place him or her under duress or stress.

Biblical principles are integrated into every subject taught at our school. Our staff are committed not only to academic excellence, but also to teaching students how to apply the truths of God's Word to every aspect of life. If you respect the teachings of God's Word, this school will complement the beliefs and ideals your child is taught at home. We look forward to partnering with you to educate your child in God's truth.

Thank you for your interest in our school. We look forward to assisting you in nurturing and enabling your child to be the best they can be.